



Coroverge

Universal Dry Verge System

Universal dry verge system

- 100% mortar free dry fix verge
- Fully adjustable for batten gauges of 260-350mm
- Hardwearing and durable
- Quick and easy to install
- Selection of popular colours



ariel[®]
the proof's on the roof

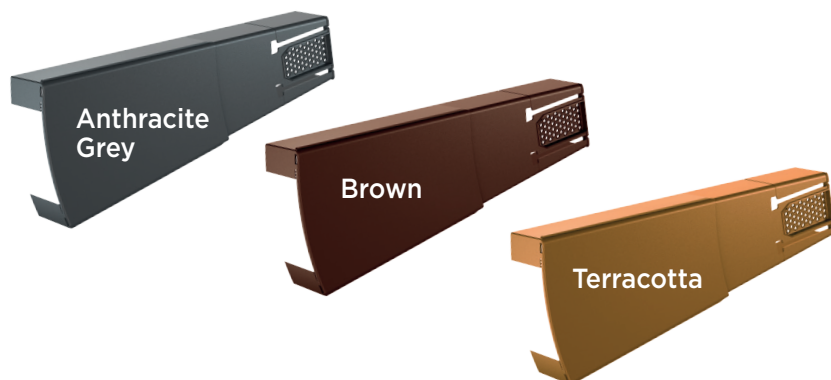
www.arielplastics.com

Coroverge

Universal Dry Verge System

Coroverge is a mortar free dry verge system which acts as a closure on the roof verge of houses, garages and porches to protect tiles from wind uplift, pest infestation and weather degradation in accordance with BS 5534.

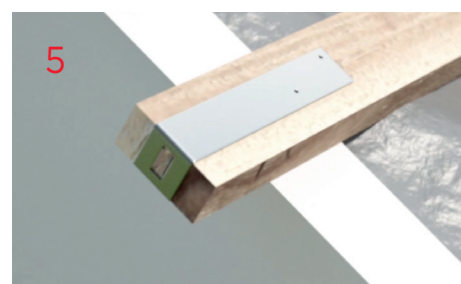
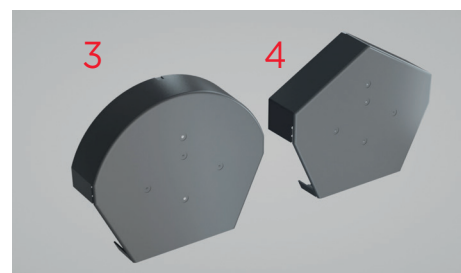
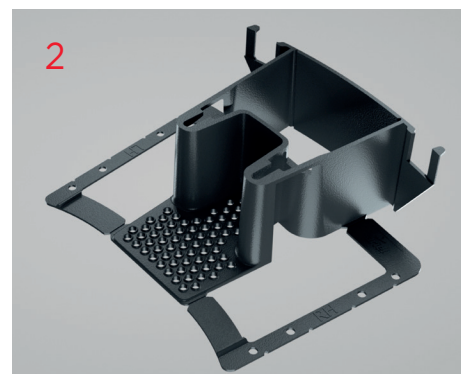
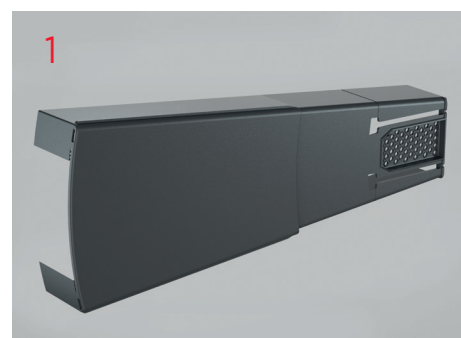
Manufactured from modern plastic material, Coroverge is very quick and easy to install. Combining strength and resilience with an attractive finish, the Coroverge Dry Verge System is available in a selection of popular colours.



Item Code	PG	Disc	Item Description	Colour	Qty
UVS/AG	071	051	Coroverge Verge Section	Anthracite Grey	10
UVS/BR	071	051	Coroverge Verge Section	Brown	10
UVS/TC	071	051	Coroverge Verge Section	Terracotta	10
UVSA/AG	071	051	Coroverge Angled Ridge Cap	Anthracite Grey	1
UVSA/BR	071	051	Coroverge Angled Ridge Cap	Brown	1
UVSA/TC	071	051	Coroverge Angled Ridge Cap	Terracotta	1
UVSHR/AG	071	051	Coroverge Half Round Ridge Cap	Anthracite Grey	1
UVSHR/BR	071	051	Coroverge Half Round Ridge Cap	Brown	1
UVSHR/TC	071	051	Coroverge Half Round Ridge Cap	Terracotta	1
UVSSP/AG	071	051	True Line Starter Piece	Anthracite Grey	1
UVSSP/BR	071	051	True Line Starter Piece	Brown	1
UVSSP/TC	071	051	True Line Starter Piece	Terracotta	1
UVS/BFIX	071	051	Batten End Clips Fixing Pack (10)	Stainless Steel	1

Components

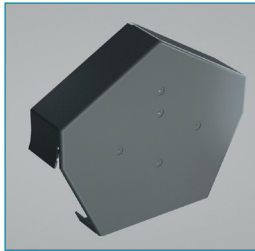
- 1 Verge Section
- 2 Starter Piece
- 3 Ridge Cap Half Round
- 4 Ridge Cap Angled
- 5 Batten Clip



Applications

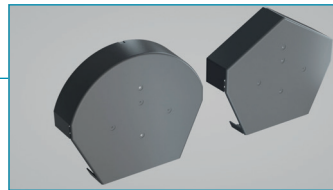
- House roof verge
- Garage roof verge
- Porch roof verge

Key Features



Flex Points

There are flex points to accommodate differing roof angles.



Cap Styles

There is a choice of angled or round options to suit the ridge style.

Ridge Cap



Verge Section



Dual Handed

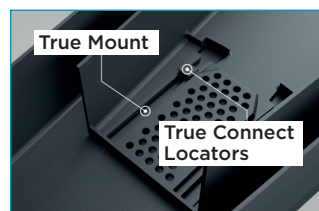
For ease of installation the Verge Sections are not handed to fit both the left hand and right hand sides of the roof.

Starter Piece



'True Line' Guide

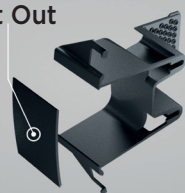
This temporary guide ensures the Starter Piece is correctly lined up with the roof tiles, guaranteeing perfect alignment on the roof.



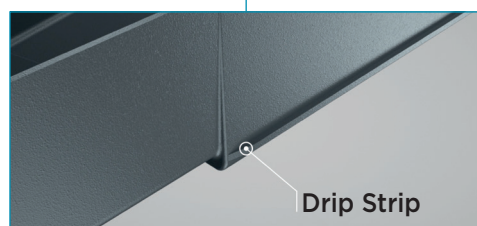
Adjustable Positioning

The 'True Connect' locators fit the 'True Mount' allowing adjustable positioning of the Verge Sections to suit various tile gauges.

Cut Out



A 'Cut Out' area provides the flexibility to work around existing gutters.



Drip Strip

Drip Strip

An in-built Drip Strip allows rainwater to run off the verge, avoiding wall staining and potential damp.

Point of Sale

To assist each outlet in selling **Coroverge Universal Dry Verge**, Ariel Plastics have developed **new** point of sale to display in store:

If you require point of sale please contact your Ariel sales representative or the office on **info@arielplastics.com** or call **01246 281111**.



Installation Video



APL038
Coroverge Display Board



APL040
Coroverge Sample Box



APL039
Coroverge Display Unit
(minimum Stock Order applies)

Merchandising Checklist

- ✓ Play the installation video on your in-store TV
- ✓ Position the sample box on the merchant counter where it can be seen by the customer.
- ✓ Fully stock the Coroverge Display Unit with product and place in a prominent position in-store.
- ✓ Display Product Boards in high visibility sites.



APL041
Coroverge
Installation Guide



Speedwell Industrial Estate
Staveley
Derbyshire
S43 3JP

Tel: 01246 281111
Fax: 01246 561111
Email: info@arielplastics.com

Orderline email:
sales@arielplastics.com

Blairlinn Road
Cumbernauld
Glasgow
G67 2TF

Tel: 01236 725536
Fax: 01236 725871
Email: info@arielplastics.com

Orderline email:
sales@arielplastics.com



Q09125

All reasonable care has been taken in the compilation of the information contained within this brochure. Ariel Plastics reserves the right to amend specifications and prices without prior notice. All recommendations on the use of our products are made without guarantee as conditions of use are beyond the control of Ariel Plastics. It is the customer's responsibility to ensure that the product is fit for its intended purpose and that the actual conditions of use are suitable.