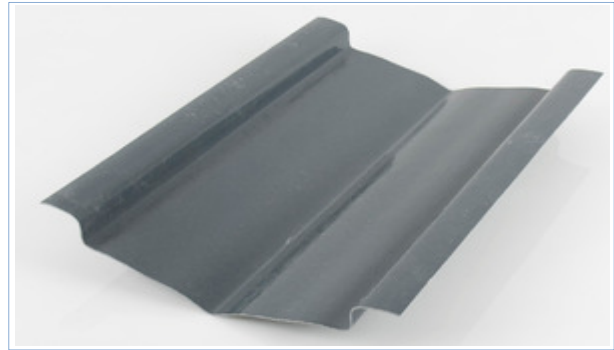


Ref. Code: AP048

Date: April 2016



Diamond 60 B Type Slate Valley

Product Features

Corodrain valley troughs are a durable alternative to lead. Heavy weight slate valley with addition of fluoride based patented surface protection. The durability of Diamond 60 has been recognised as matching code 7 lead by Housing Association Property Mutual (HAPM).

- BBA Approved Cert No. 89/2153
- UV light and acid rain resistant
- At least as durable as lead
- Less prone to theft
- Quick to install
- Designed for harsh environments or prestige buildings.
- Smooth surface inhibits the growth of moss & lichen and build-up of debris
- Fire resistant to SAB to BS476 part 3 and Class 3 to BS476 part 7
- Suitable for use on roofs with pitches from 17.5° to 55°
- Can accommodate a maximum difference between two rafter pitches of 15°
- Designed for use with natural slate, manufactured slate and plain tiles
- Fixes over the batten for fast and simple installation

Product specification	
Code	BD30
Length	3M
Width	360mm
Standard weight	2.4Kg/m ²
Thickness	1.6mm
Colour	Grey/Blue
Material	GRP - High quality unfilled polyester resin with glass fibre reinforcement

Valley Selection Table

RAFTER PITCH (degrees)	ROOF AREA LESS THAN 25m ²		ROOF AREA 25 – 100m ²		MINIMUM LAP LENGTH
	VALLEY TYPE	MAX. VALLEY LENGTH	VALLEY TYPE	MAX. VALLEY LENGTH	
17.5 TO 22	B / D	7.0m	—	—	350mm
22.5 TO 29	A / B / D	7.0m	B / D	14.5m	300mm
30 TO 34	A / B / D	7.5m	B / D	15.0m	200mm
35 TO 39	A / B / D	7.5m	B / D	15.5m	200mm
40 TO 44	A / B / D	8.0m	B / D	16.5m	150mm
45 TO 49	A / B / D	8.5m	B / D	17.0m	150mm
50 TO 55	B / D	9.0m	B / D	18.5m	150mm